

Exclusive Savings from Studentcare Network Partners*

- Your Plan Coverage**

You're covered for the insured portion of your Plan regardless of which licensed health-care practitioner you choose.
- Studentcare Networks**

By consulting a Network member, you'll get additional coverage.

Example of a claim made using a Studentcare Dental Network practitioner:



Save More with Network Members

greiche & scaff

\$150 off*
eyeglasses

10% off*
contact lenses

*Certain conditions apply.

LASIK MD
VISION

\$400 off
Custom LASIK*
(\$200 off per eye)

\$100 off
Standard LASIK*
(\$50 off per eye)

*Certain conditions apply.

PSYMONTRÉAL

\$30 discount
on a regular 50-minute adult therapy or coaching session

and more!
Dentists, physiotherapists, and chiropractors

*Studentcare and the insurers do not endorse or assume any responsibility with respect to the use of their services.

An Essential Service for Students

As a Bishop's University student and an SRC member in the Fall or Winter Semester who is paying tuition fees at either the Canadian or Quebec rates, you have access to one of your Students' Representative Council's most important services, the SRC Student Health & Dental Plan. It covers many benefits not provided by provincial health-care programs, like vision care, dental care, and travel care abroad. International students are automatically covered by the Dental Plan only. Visit www.studentcare.ca for more details on eligibility.

We invite you to verify if you're already covered by another plan (through an employer, parent, or spouse). If so, the student Plan can still be of interest to you, as you can be reimbursed the remaining eligible fees (partially or fully) through your secondary plan.

GreenShield

GreenShield
8677 Anchor Drive
PO Box 1606
Windsor, ON N9A 6W1
1-888-525-7587
Health, vision, and dental benefits are insured by GreenShield.
Group Number: BIS

Securian
CANADA


Securian Canada
1400-25 Sheppard Avenue West
Toronto, Ontario M2N 6S6
1-888-852-2419 or 1-514-904-4730 for claims
Group Number (travel): 97180
Securian Canada is the brand name used by Canadian Premier Life Insurance Company and Canadian Premier General Insurance Company to do business in Canada. Trip Cancellation and Trip Interruption/Trip Delay benefits are underwritten by Canadian Premier General Insurance Company. All other benefits are underwritten by Canadian Premier Life Insurance Company. For more information visit www.securiancanada.ca or call **1-844-894-0378**.

See www.studentcare.ca for details on accidental death and dismemberment benefits.

To determine if these products are right for you, for more details, or to contact a licensed insurance representative, visit www.studentcare.ca. Please note that Empower Me, The Essentials, and HI are not insurance products.


Questions? Contact Us

Scan for Plan details



NEW! Submit claims quickly and easily

Claim through GreenShield's online portal at app.greenshieldplus.ca or the **GreenShield+** mobile app.



NOTE: This document provides a summary of Plan benefits. It is not a complete description of coverage, restrictions, and exclusions. Please visit www.studentcare.ca to learn about all the applicable conditions and exclusions.



OUR ENVIRONMENTAL COMMITMENT ON PAPER

This document contains 100% post-consumer fibre, Certified EcoLogo, Processed Chlorine Free, and FSC® Certified Recycled. Manufactured using biogas energy.

STUDENTCARE_BRO_BISHOP'S_SRC_09-24



2024-2025

Your SRC Student Health & Dental Plan

Group Numbers

Health, vision, and dental: BIS
(GreenShield)

Travel: 97180
(Securian Canada)



Make the most out of it

Providing Quality Coverage

Health Plan

 **Health**
Over \$10,000

Prescription drugs
Vaccinations
Psychologists

Physiotherapists
Ambulance
and more!

 **Vision**
Over \$500

Eye exam
Eyeglasses and contact lenses
Laser eye surgery
Accident coverage for eyeglasses

Travel Plan

 **Care Abroad**
Up to \$5,000,000

120 days per trip, up to \$5,000,000
per lifetime, trip cancellation and trip
interruption in the event of a medical
emergency

Scan for a
summary of
benefits



Dental Plan

 **Dental**
Up to \$1,000

Checkups
Root canals

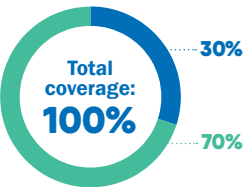
Cleanings
Extractions

Fillings
and more!

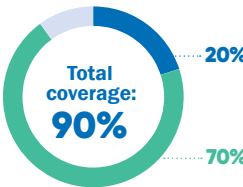
 Insured Portion  Studentcare Dental Network Savings

Preventive
Services

Recall exams,
cleanings

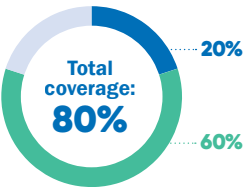


Impacted
Wisdom Tooth
Extractions



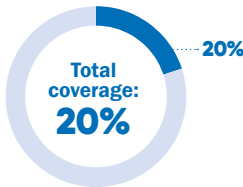
Basic
Services

Fillings, oral
surgery,
endodontics
(root canals),
periodontics
(gum treatments)



Major
Restorative

Crowns,
bridges,
posts



Change-of-Coverage & Opt-Out Periods

 **Fall Semester students:**
Sept. 20 – Oct. 16, 2024

New Winter Semester students only:
Jan. 24 – Feb. 26, 2025

Health & Dental Plan

The Plan is a non-mandatory automatic contribution.

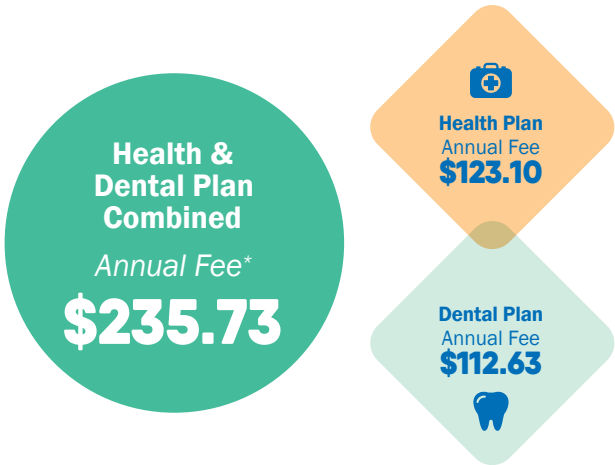
All opt outs or coverage changes can be completed online at www.studentcare.ca.
You can request an annual opt out.

HI (Virtual Health Care)

See www.studentcare.ca for opt-out procedures.

At a Great Price

Check it out!



*This is an annual Plan. Students will therefore be covered for one year. If you begin your studies in the winter, you can submit an opt-out or change-of-coverage request in the Winter Semester.

 **Fall 2024 Combined Fee**
(September–August)
\$235.73

 **Winter 2025 Fee**
(January–August)
\$157.16

Health Plan: \$82.07
Dental Plan: \$75.09

Introduce Me to Your Family

Enrol loved ones for less

You can enrol your family (spouse and/or dependent children) each year by paying an additional fee, over and above your fee as a member of the Plan. Common law couples are eligible. Visit www.studentcare.ca for instructions.

 **Add one dependant for**
\$235.73
for full-year coverage*

 **Add unlimited dependants for**
\$471.46
for full-year coverage*

* Family enrolment fees for coverage from Jan. 1 – Aug. 31, 2025 for new Winter Semester students are available at www.studentcare.ca.

Plus: more services designed to support students

Mental Health & Wellness

Empower Me
Powered by **Dialogue**

A student assistance program providing mental health and wellness services 24/7



Legal Care Program

The Essentials

A consultation service for all your legal questions, and legal representation for disputes related to housing, employment, academic rights, and more



Virtual Health Care

HI
Powered by **Dialogue**

Virtual health care that connects you with nurses and physicians from anywhere in Canada

Full-year fee: \$36
Winter 2025 fee: \$24



For eligibility details, see www.studentcare.ca.